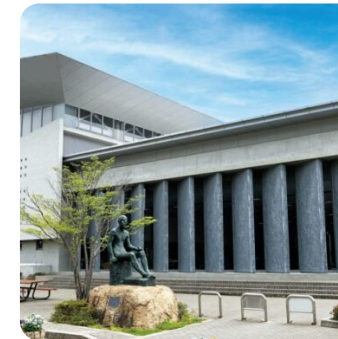


Tenri University is located amidst beautiful natural surroundings in the center of Nara Prefecture, cradle of the ancient Japanese state. Many famous temples, shrines, and archaeological sites from the ancient capital lie in the vicinity, and are visited annually by large numbers of tourists. The vitality of the Osaka and Kyoto urban centers can be reached within an hour by train, and the fashionable city of Kobe, with its widespread appeal to the young, can be reached by train in less than two hours.



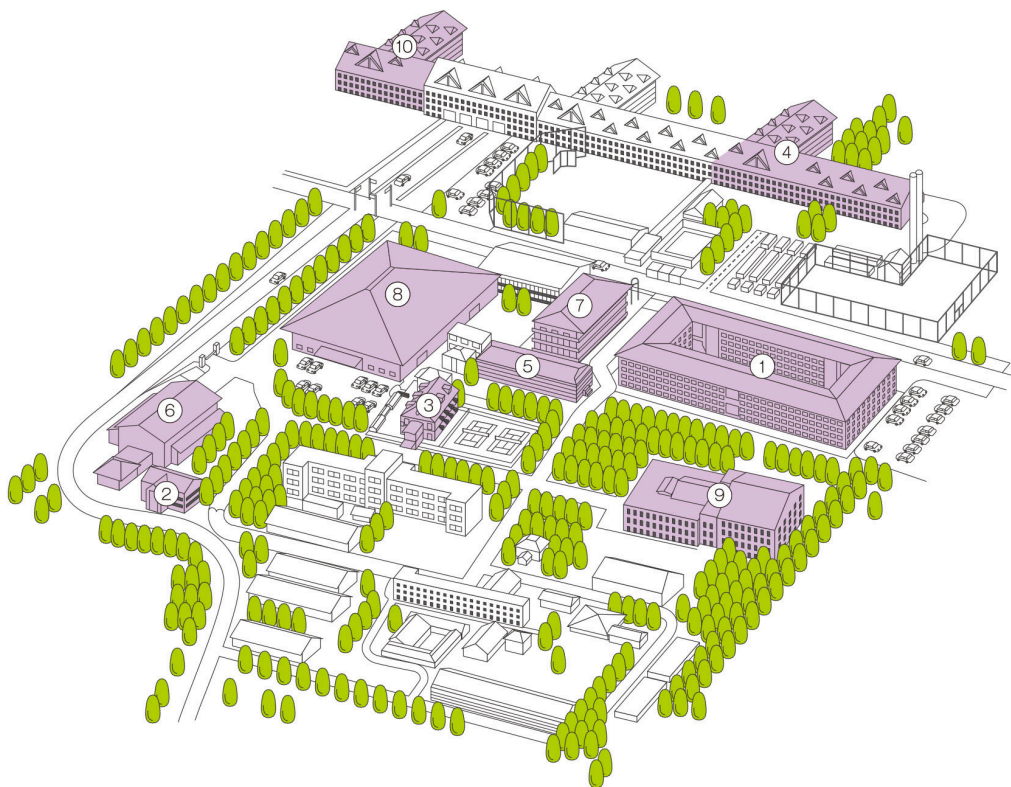
Somanouchi
Campus



Taiikugakubu
Campus



Bessho
Campus



1. Main Building (Faculty Research Hall)
2. Founder's Hall
3. Hall No. 9 (Furusato Kaikan Alumni House)
4. Hall No. 3, Hall No. 4 (Computer Assisted Language Learning Classrooms)
5. Hall No. 8 (Information Library)
6. Shinkokan Student Union (Student cafeteria)
7. Hall No. 2 Counseling Room
8. Somanouchi Gymnasium No.1
9. Shops (Seven-Eleven, Maruzen, Campus Support Co.)
10. Affiliated Tenri Central Library
11. Affiliated Tenri University Sankokan Museum



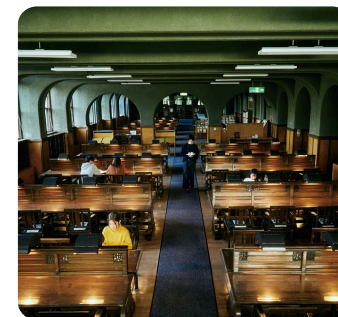
2. Founder's Hall



4. Hall No. 3, Hall No. 4



7. Hall No. 2



10. Tenri Central Library

Application Portal

- Spring Semester (April Start) : The application portal opens from mid to late September of the previous year.
- Fall Semester (September Start) : The application portal opens from mid to late February of the same year.

Application Deadlines

- For Spring Semester - November 20
- For Fall Semester - April 20

Step 1: Completion and submission of the Nomination Form.

Step 2: Download, fill out, and upload the necessary forms.

List of Application Documents

1. Application for Exchange Program with Tenri University*
2. Japanese Language Proficiency Evaluation*
3. Certificate of Health*
4. Certificate of Enrollment at Home University
5. Academic Transcript at Home University
6. Personal History*
7. ID Photo
8. Copy of valid Passport
9. Copy of Japanese Language Proficiency Test (JLPT) Certificate
10. Certificate of Eligibility (CoE) Application Information*

**For items marked with an asterisk (*), please download the designated form from the application portal and complete it.*

For further details, please contact the coordinator at your home institution.

Semester including Exam Sessions

Spring: Early April - Late July

Fall: Late September - Early February

Language of Instruction

Japanese

Preferred Language Proficiency

Equivalent to the Level 2 of Japanese Language Proficiency Test (JLPT) or above, however, applicants with other proficiency levels are also welcome.

Health Insurance System

International students who plan to live in Japan for over three months are required to join the National Health Insurance system “Kokuho”.

International Student Support



iCAFé (International Cafe)

iCAFé is a casual intercultural exchange space where students and faculty engage in conversations and events.

One-on-One Buddy System

The Tutor System supports international students from assisting with moving in to paperwork, which also allows Japanese students to experience cultural exchange.



Cultural Experiences and Events

Leveraging its strong connections with local communities, Tenri University offers international students various cultural experiences both on and off campus.



HOUSING ARRANGED

Off-campus fully-furnished single room with kitchen, bath, and toilet

ACCOMMODATION COST

About 37,000 Japanese Yen / month, including utilities
Conditions vary depending on the agreement (e.g., rent exemption, utilities exemption).



ESTIMATED MEAL COST PER MONTH

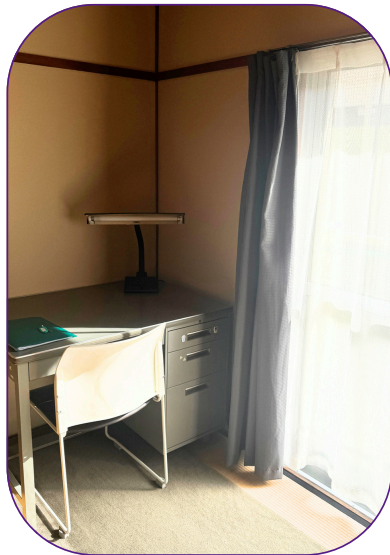
20,000 ~ 30,000 Japanese Yen / month, depending on individual need
(student needs to cook for oneself)



ADDITIONAL COST

About 10,000 Japanese Yen for buying a bicycle with 2,000 Japanese Yen for the required insurance for using a bicycle.

DORMITORY PHOTOS



Photos are illustration purposes, actual room details may vary.